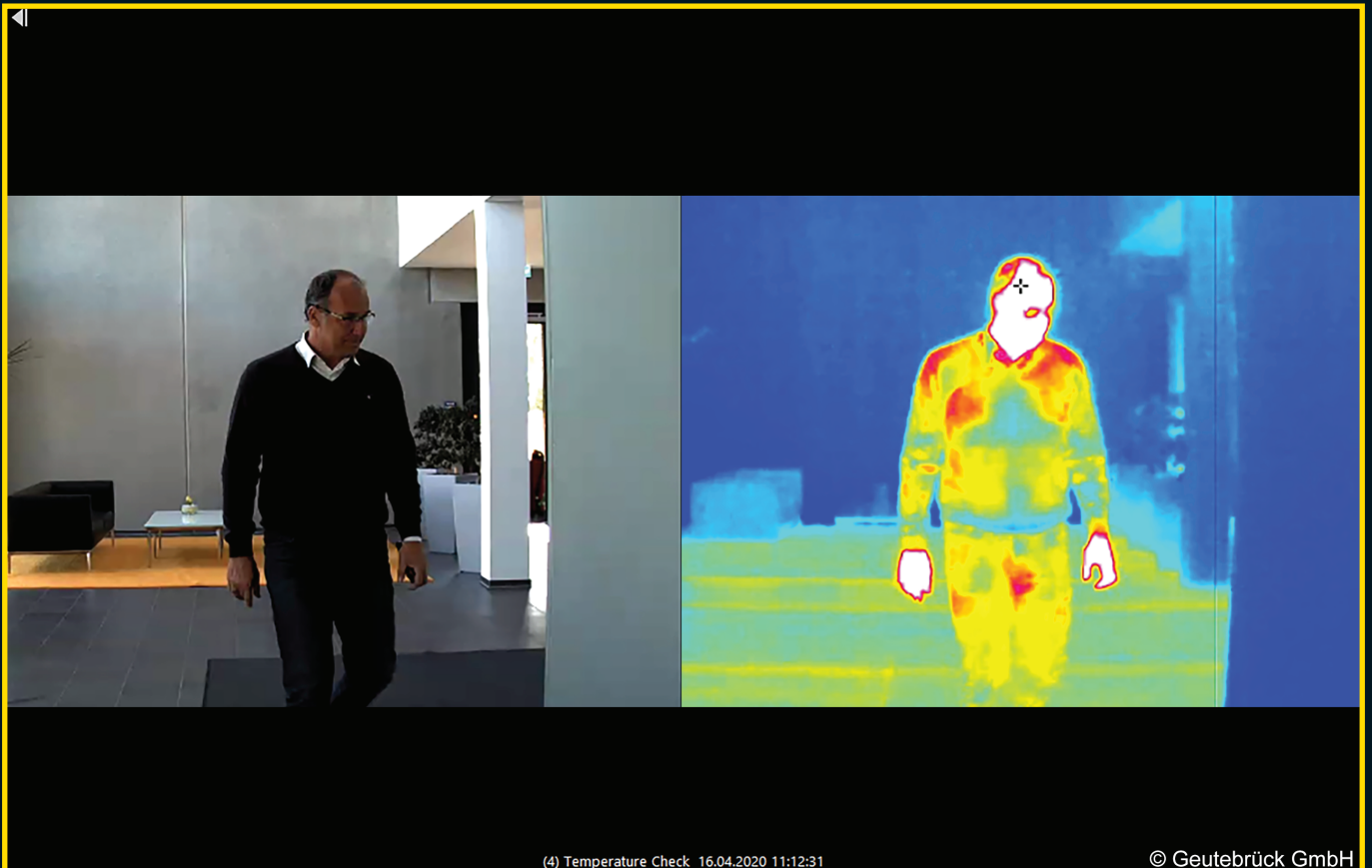


## Body Temperature Measurement



# Real-time body temperature measurement

Geutebrück's complete solution for body temperature measurement via camera image detects the temperature of a person as soon as he or she enters your facility.

Our convenient solution includes a thermal camera and a HD video camera as well as a G-ST (min. G-ST 3000+).

The user-friendly software automatically determines whether the preset body temperature threshold is exceeded and alarms the operator..



## **Fields of application**

Interior zones with constant temperature.



## **Temperature Measurement**

Accurate measurement of the skin temperature using the thermal camera.



## **Data protection compliant**

The password-protected pixelation of moving persons protects the personal rights of each individual.



## **Alarm**

An alarm with the corresponding video image is displayed in real time on your monitor, tablet or smartphone.



## **Protection**

Affected persons can be stopped directly at the entrance and receive appropriate care.

Area of application: production facilities, industry, commercial enterprises



The protection of your employees has the highest priority. The loss of several employees or, in the worst case, the entire workforce, leads to production downtime, disruptions to dependent supply chains and significant financial damage. Stationary temperature measurement systems at the entrances to your company proactively check the body temperature of your employees and reduce the risk of infection among your employees. By the password-protected pixelation of the persons in the video image, the personal rights according to the GDPR are also fully respected.

Area of application: ministries, authorities, offices and town halls



Given the current situation, it is especially important that government and administrative departments, offices and city halls are in a position to work seamlessly to manage a crisis and arrange aid.

In this context, the focus is on the welfare of officials and staff. Our supply system would collapse otherwise.

Temperature measurement systems at the entrances to the buildings reliably detect deviations from the standard temperature.

# Area of application: Airports / Border crossing points



People from many different parts of the world gather at airports and border crossings.

The automatic temperature detection system shows staff deviations from the norm quickly and easily - also when large groups are present.

# Area of application: Public Transport



The mobility of people, especially in cities and metropolitan areas, is highly dependent on public transport.

All passengers wish to be taken safely, on time and in safety to their place of work, to the doctor, to shopping in the city centre and many other destinations.

Stationary temperature measuring systems at neuralgic traffic hubs provide real-time information about deviations from the set threshold value.



# The fields of application are manifold and minimize the risks



Talk to us.

We will support you with the planning and construction of your system.

## We are Geutebrück

- 50 years' experience in the field of video management ...
- ... with our own development on site.
- From the first day: Made in Germany ...
- ... and represented worldwide by sales and service partners..

