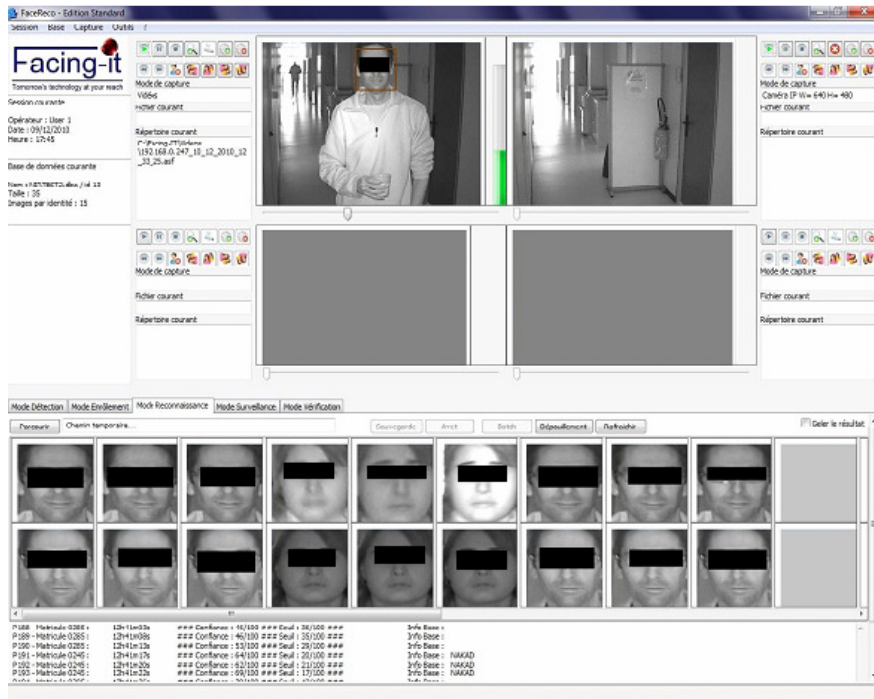


## Face Detection and Recognition



### FACE DETECTION

FaceReco contains state of the art algorithms for:

- Multiple face detection
- Face tracking
- Eye detection
- Mouth detection

In addition the software includes built in and custom stream capturing from video files and live cameras and is compatible with Milestone X-Protect and Geutebrück Geviscope

### FACE RECOGNITION

FaceReco provides state of the art algorithms for:

- Controlled face recognition
- Nominal face recognition
- Covert face recognition

In addition the software provides functions for alert generation upon suspect recognition using SMS, email, visual or audio modes.

Facing-IT provides you with an efficient, easy to deploy, face recognition solution for enrollment, one-to-one and one-to-many matching. The FaceReco software contains modules for face finding, template creation, quality analysis, watchlist searches and alerts packaged in a simple windows 32 application. The software can be seamlessly integrated into existing applications as well as in completely new application development and is compatible with Milestone X-Protect and Geutebrück Geviscope.

FaceReco is intended for PC-based biometric application development. It includes state of the art face detection, tracking and recognition on static pictures on live streams, and in videos,

The software is developed for Microsoft Windows platform. It is tested on Windows Vista, Windows XP, and Windows 7.

Sample applications and documentation are included in the package. Additional interfaces and samples can be provided on request.

The FaceReco software supports multiple detection and recognition algorithms and works with either static images, video files, or live camera streams. Additional functionality is provided for eyes detection, mouth detection, facial contour cropping, forensic face reconstruction, and alert generation

### LIVE PROCESSING

The software is capable of processing live camera streams for real-time face detection, tracking, and recognition.

### OFFLINE PROCESSING

The software processes video databases in offline mode for automatic face detection, recognition and video database indexing

For more information on any of our products or services please visit us on the Web at: [www.facing-it.com](http://www.facing-it.com)

## Technical Specifications

- Platforms Supported: Microsoft Windows XP, Vista, Windows 7; Linux version available through special requests.
- Image Input Formats JPEG, JPEG 2000, BMP, GIF, PNG files
- Video Input Codecs : MJPEG, LJPEG, H261, H263, MPEG1, MPEG2, DIVX MPEG4, XVID MPEG4, RV, WMV
- Input Cameras : MJPEG encoded IP cameras, Axis brand
- Supports inputs from Milestone XProtect
- Supports inputs from Geutebrück Geviscope
- Robustness: The algorithm compensates for natural variability in the face such as expression, facial hair, and hairstyle.
- Lighting : The algorithm is robust to changes in lighting conditions, and does not require additional light normalization
- Eyeglasses: FaceReco uses multi-input enrolment to match faces with or without eyeglasses.
- Background: FaceReco finds the faces in an image against any background, plain cluttered or in crowd. Recognition performance is unaffected by the background.
- Image Resolution : Minimum IOD of 40 pixels
- Race and Gender: Performs well on all races and both genders.
- Partial occlusions and disguise: Forensic face reconstruction matches and reconstructs occluded or disguised faces

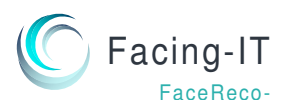
## Pack Includes

- Facing-FaceReco  
Contains the elements that encapsulate Facing-IT technology and its supplemental functionality, including face detection, face tracking, facial feature finding, quality analysis, template creation, verification, identification, watchlist searches and alert generation.
- Media Processing application  
A module integrated to FaceReco that allows capturing of video files and IP camera streams. Supports frame capture from .avi .mpeg .flv .mp4 .asf, .wmv, and ts files,
- Software Documentation



### FACERECO FEATURES

- [Face Database Creation](#)
- [Face Detection](#)
- [Face Tracking](#)
- [Facial Features Detection](#)
- [Identity Enrolment](#)
- [Identity Verification \(1:1\)](#)
- [Identification \(1:N\)](#)
- [Suspect Recognition](#)
- [Alert Generation](#)



Parc Technologique des Rives de l'Oise - BP 50149  
60201 Compiègne Cedex  
FRANCE  
Phone +33 (0) 3 44 90 78 10  
Fax +33 (0) 3 44 90 78 11  
Email [contact@facing-it.com](mailto:contact@facing-it.com)