



SECURITY FOR INDUSTRY AND SMEs



„Security for industry and SMEs“
in our homepage

Safety for you, your employees and your property, whether retail space, warehouse, workshop, office or company premises

As the manager or owner of small or medium sized enterprise, security is of vital importance. It seems only times unnecessarily – until something happens. Then it becomes very important very quickly. Our video security solutions are designed so that you can forget all the technology and details, as long as nothing happens – and everything is there when you need it. Efficient and effective, yet easy to manage. With flexible interfaces to access control or intrusion detection systems, to the point-of-sale system or your smartphone, your tailor-made system meets your needs exactly.

submitted by:

The benefits of security for industry and SMEs



Protection against theft, fraud or vandalism

A good security concept protects you against external risks. The right technology helps. It detects intrusion attempts, alerts the security guard, documents procedures and processes. For your security.



Better terms with your insurance

The right safety concept can give you a good negotiating position with your insurance, for low premiums and a low deductible. Your investment pays off quickly.



Security as an argument for your customers

Prevention against external risks also means more security for your customers. You reduce the risk that you cannot make deliveries as promised. Because your customers rely on you.

THE RIGHT (IMAGE) INFORMATION FOR YOUR NEEDS

It starts with your risks. This determines what you want to see and what you need to monitor. This is always different, because every scene is different. Wide or narrow, clear or detailed, inside or outside, bright or dark. The camera has to be able to handle anything. But not just one, rather for every need the right one, the right model. We respond to the breadth of your requirements with a wide range of cameras and accessories: From simple fixed domes for indoor use to high-resolution box cameras with megapixel lenses for outdoor use to ultrafast speed-dome cameras. From integrated lighting for short distances to the G-Lite spotlight series to thermal imaging cameras that provide reliable images even in total darkness. Particularly suited for detection of persons in outdoor application using video analysis methods.

The advantages at a glance



Detection

Use the video system for detection of intruders with a suitable outdoor cameras and video analysis. The best solution is a thermal imaging camera.



Recognition

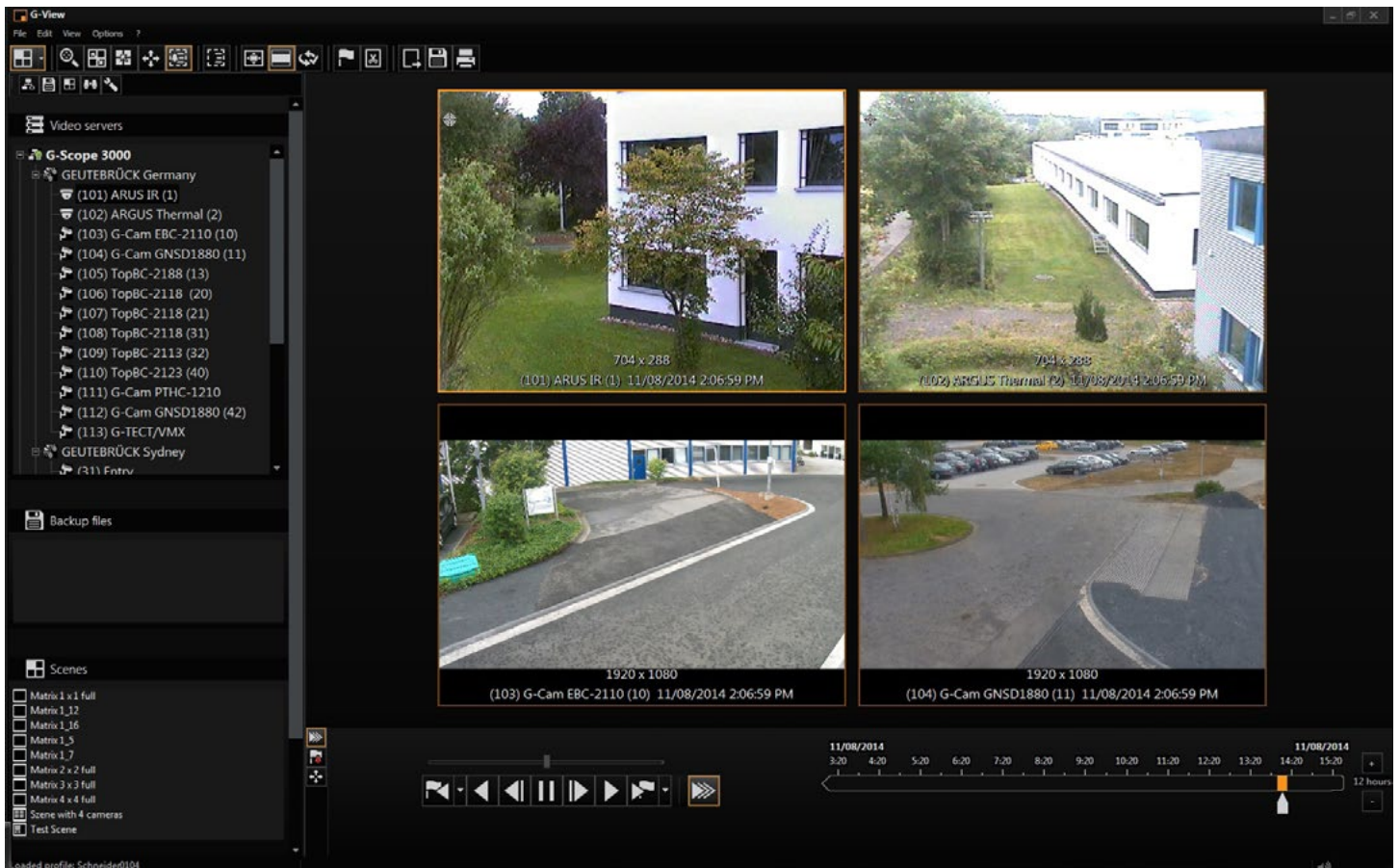
The right angle, the right lighting and the right resolution. Everything has to fit to see who did what and when.



Documentation

Once something happens, it must be proven properly for admission in court. You have razor sharp images that document the entire event.





The advantages at a glance

THE CRUCIAL INFORMATION, WHEN AND WHERE YOU NEED IT

Good pictures are one thing, but they also have to be managed effectively. Our video management solutions record, detect, alert, qualify and document – all in one system. Flexibly equipped and installed according to your needs. Picture resolution and recording time, alarm criteria and alarm responses, image activation or access rights. Every setting is adapted to your needs and can be changed on the fly at any time, quickly and easily. Video playback is as flexible as it is comfortable. Remote access via a web browser or using the specially developed G-View software on your computer at home or in the office, provides you with the images you need at any time. The user interfaces are kept uniform and simple – the technology disappears into the background. Data privacy is also ensured. The comprehensive user rights management system, the flexible privacy options and the configurable two-person password system will satisfy employees' needs.



The system that your business needs

The flexible equipment and individual setup makes each system unique. Perfectly tailored to you and your company's needs.



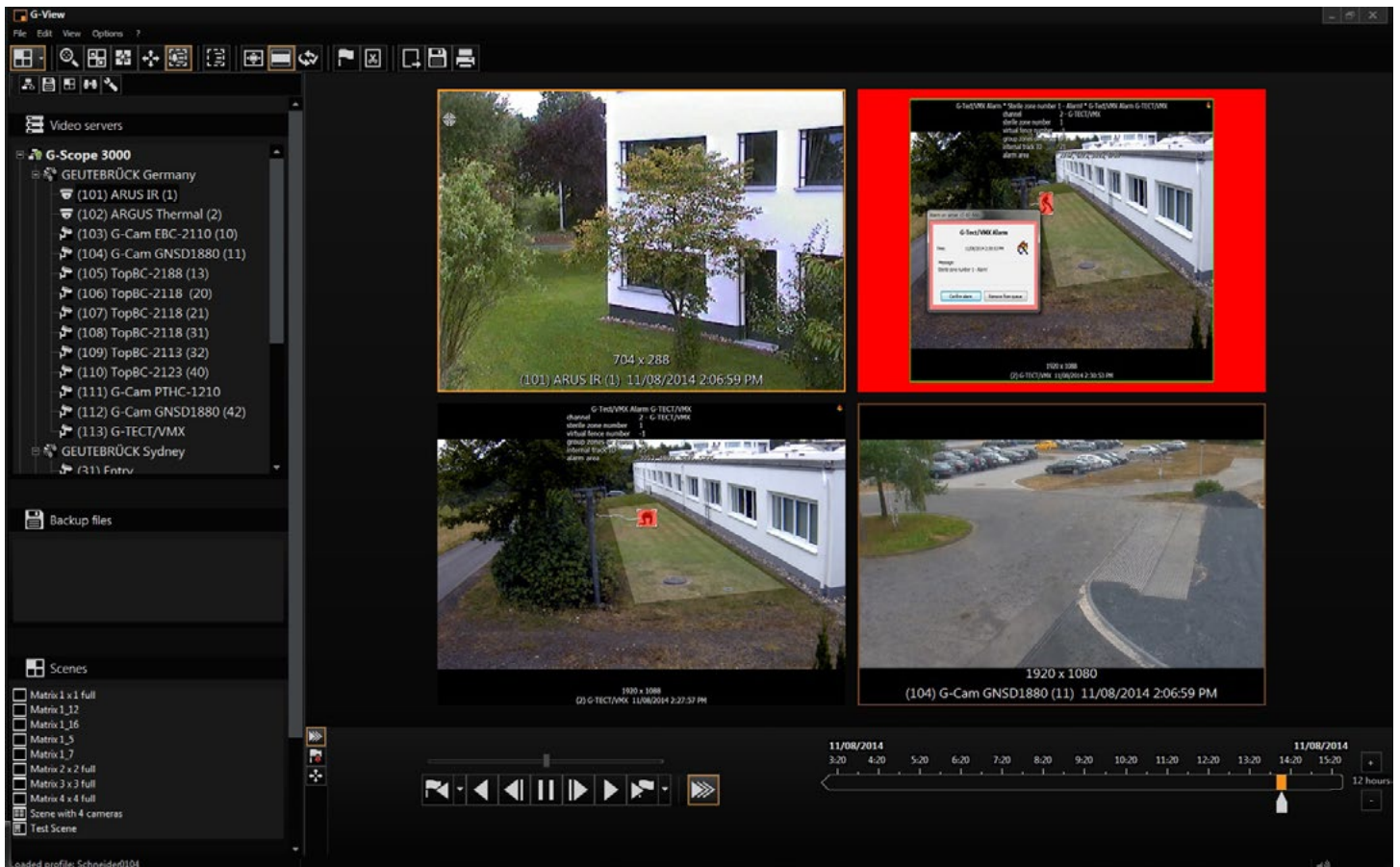
Image access, wherever and whenever you want

You work a lot on the road or in the home office and want to remain up-to-date? Whatever happens. You have access to your system from anywhere, anytime.



The data privacy that your employee representatives love:

We know the debate about privacy – whether with the employees or with the authorities. We can't save you from that discussion, but we can give you good arguments.



The advantages at a glance

INFORMATION, NETWORKED AND MORE POWERFUL THAN EVER

Information alone is useless if it is not available at the right moment and in the right context. In order to identify the right image at the crucial moment, additional information is often helpful. The date and time are simple examples. Even the video image itself can provide valuable information. The integrated video analysis detects independently intruders who enter your premises at night. Or the automatic license plate recognition captures every vehicle that passes your driveway. Or the additional information can come from a third-party system, connected via interfaces. Your POS system provides billing data that is stored with the corresponding images. Or your access control system will alert you when an unauthorized person tries to enter the building. Use this information to optimize your security processes. Let the system automatically activate images in the control center to verify the alarm and to initiate emergency measures. Use process data as fast and efficient search criteria to clarify suspicious transactions using the recorded image sequences. All information is linked together in a meaningful way, providing greater use than just the individual images.



Alerting

Integrated video analysis alerts you automatically. Whether an intruder climbing over your fence at night or a vehicle traveling unannounced onto your premises. You know immediately and can respond without delay.



Documentation

Link the image recordings with process data from your business transactions. If you discover something suspicious, you can find the recorded sequences quickly and easily.



More security

Integrate all your security technology systems. When an alarm occurs, have the images activated in the control center. In case of false alarms, this can save on expensive travel costs. And in an emergency it saves valuable time.