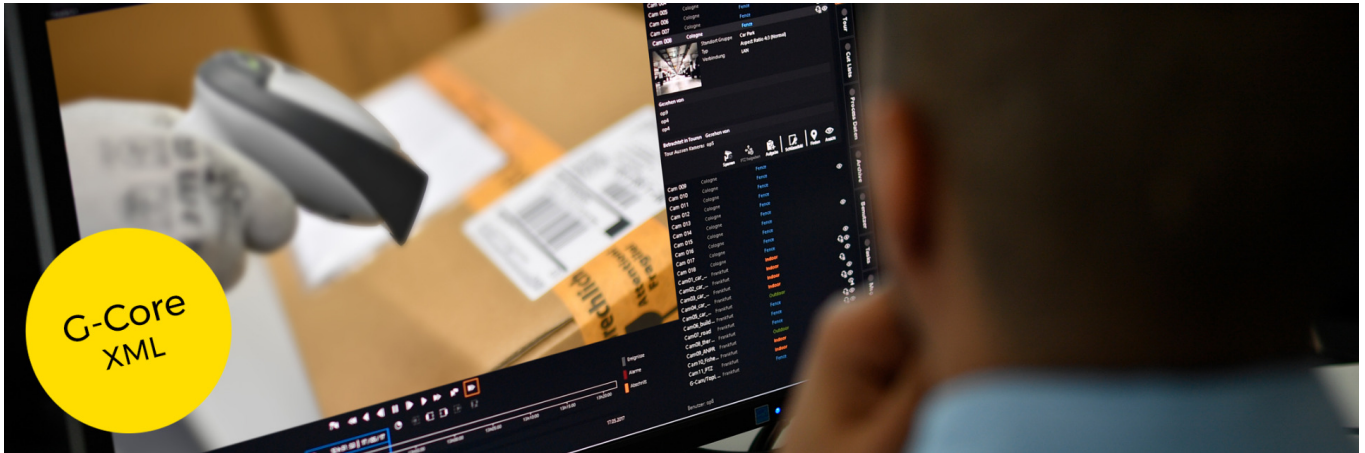


Video security linked via XML. G-Core/XMLConnect



The G-Core/XMLConnect interface connects the Geutebrück G-Core (G-Scope) video management system with third-party applications (databases), which can make data available in XML format (Extensible Markup Language).

The data can be exchanged via XML exports of the third-party applications, which are either actively transmitted or requested by G-Core. This way, data from SQL databases (Microsoft, Oracle) can easily be imported into the G-Core database and used to trigger G-Core actions. The integrated plug-in architecture and the extensive configuration options mean that there are many different possible applications. This way you can access an external whitelist of number plates to either grant or deny access to a depot, for instance.

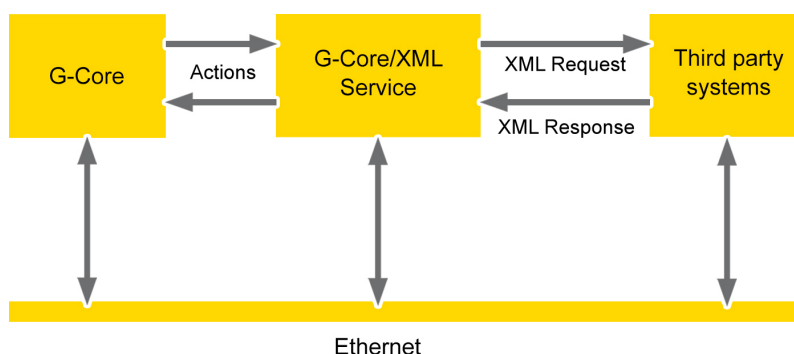
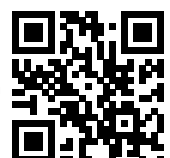
Advantages:

- Information from external databases control your G-Core video management system.
- Automatic or event-driven data exchange via XML exports between third-party applications and the G-core database.
- Plug-in architecture that adapts to any transmission interface.
- Communication via file transfer or network request.
- Simple data import from SQL databases (Microsoft, Oracle).
- Extensive configuration options for the flexible use of the data to control G-Core actions.

Recommended uses and applications

Controlling your video management system via external database information gives you many different possible applications, especially in logistics and wherever dynamic database entries have to be visually documented.

www.geutebrueck.com



Technical data

G-Core_XMLConnect_SI_EN 30.04.2018

Designation	Functions
Interface	The standardized XML interface (W3C, World Wide Web Consortium) enables you to use XML exports from third-party applications. Information from SQL databases (Microsoft, Oracle) can be imported into the G-Core database and trigger G-Core actions. Can be used with G-Core version 2.3.1.248 or higher.
Configuration	The adaptation to third-party applications is carried out through extensive configuration and, if necessary, by setting up a communication plug-in. The plug-in interface is simple and enables the set-up of third-party plug-ins.
G-Core/XMLConnect	Order No. 8.34079 Software option for the connection of any third-party application to G-Core (G-Scope) via an XML interface.

Technical changes and delivery options reserved.

GEUTEBRÜCK GmbH

Im Nassen 7-9 · D-53578 Windhagen · Tel. +49 (0)2645 137-0 · Fax-999 · E-mail: info@geutebrueck.com · Web: www.geutebrueck.com